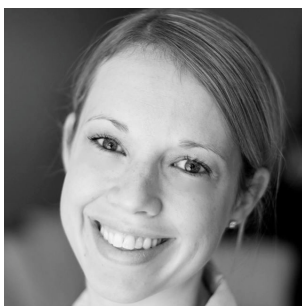




MONDAYS - 12:20-1:10pm - LAUREL 108

SEP
18

Katherine Whitaker, PhD
Assistant Professor
Physics



Tracing the cosmic shutdown of star formation in massive galaxies

OCT
16

Lindsey Lepley, PhD
Assistant Professor
Kinesiology



Thinking about the future: How the mode of exercise prescription after ACL injury influences outcomes

NOV
13

Kristina Wagstrom, PhD
Assistant Professor
Chemical & Biomolecular Engineering



Engineering solutions to community air pollution concerns

The series is open to **all undergraduate and graduate students** and is designed especially for students conducting (or interested in conducting) STEM research.

For more information, visit ugradresearch.uconn.edu/stem-seminar-series

If you require an accommodation to participate in a STEM Seminar event, please contact Jodi Eskin at 860-486-7939 or jodi.eskin@uconn.edu at least 5 business days prior to the seminar.

Attending a STEM Seminar event counts toward Sophomore Honors.